



# Infinitely adjustable dosing device, type FDAA



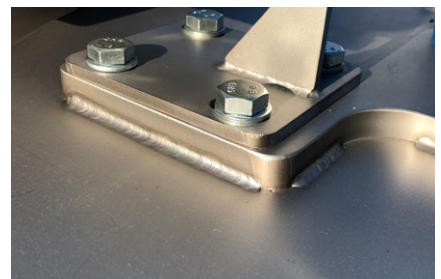
FDAA stands for the wing dosing and discharging device and is a completely in-house design by Morewa AG.

Its main feature is its precision dosing capability. This starts at 5 grams, but also effortlessly controls high quantities of up to 30 tons per hour. This is made possible by the newly designed V-cut dosing gate valve in combination with an infinitely variable linear drive.

A further innovation is the free adjustment of the blade gap from 2 mm to 12 mm. This means that you can also dose granular products gently and with low wear.

The dosing unit is supplied as a custom-made product or on request in the standard sizes 400, 500, 600, 800 or 1000 mm.

During the construction we consciously paid attention to a massive construction. Neither the material nor the performance of the machine was compromised. The vane dosing device can be equipped with motors between 3 and 7,5 kW.



**Morewa AG**

Mühliacherweg 20  
CH-5105 Auenstein

Tel. +41 (0)62 897 28 55  
Fax +41 (0)62 897 31 41

[www.morewa.ch](http://www.morewa.ch)  
[info@morewa.ch](mailto:info@morewa.ch)





#### + Special features

- Free adjustability of the wing opening from 2 mm up to 12 mm
- Precise dosing: The range extends from 5 grams to 30 tons per hour
- Custom-made or standard sizes of 400, 500, 600, 800 or 1000 mm

#### + Application

- silo discharge
- Loading of dosing scales
- Component dosing in weighing hopper / bucket
- Demixing-free discharge from container
- As distributor to intermediate containers Dosing of micro components

#### + Options

- 1–4 outlets
- Discharge flaps with pneumatic or linear drive Open
- Closed or Large – Fine – Closed
- Seal air purged
- angle actuator
- Additional outlets / 2–4

